



LIMITED WARRANTY AND  
INSTRUCTION INFORMATION

**Thank you for purchasing a Chase-Durer Timepiece. We are certain that with proper care and maintenance, your timepiece will provide accurate service for years.**

**Our Mission Statement:** We have held firm to the belief that supremely crafted timepieces can be offered for modest sums. This belief is the founding principle of our flagship and still drives us today. By honoring our convictions, we continue to turn the balance of power for all those who desire it and deliver true timing mastery. May all those who possess our timepieces and pass through our doors experience the quality, value and care in every piece we create as well as the spirit of never-ending possibilities in everything we do.

Este folleto está disponible en español en nuestro sitio web [www.chasedurerwatch.com](http://www.chasedurerwatch.com). Simplemente haga clic a "Manual" en la parte de abajo a la derecha de la página de inicio.

Diese Broschüre ist in deutscher Sprache auf unserer Website unter [www.chasedurerwatch.com](http://www.chasedurerwatch.com) verfügbar. Klicken Sie einfach auf „Manual“ am Ende der Homepage.

Ce livret est disponible en français sur notre site web [www.chasedurerwatch.com](http://www.chasedurerwatch.com). Cliquez sur « Manual » au bas de la page d'accueil.

中文版維修手冊可在官網 [www.chasedurerwatch.com](http://www.chasedurerwatch.com) 主頁底部點擊查詢。

This booklet contains details on our 3 year limited warranty and contains general information on timepieces. We suggest reading this booklet entirely to better understand how to properly maintain your timepiece. **Due to the large selection of models and movement calibers that we use, we ask that you download the specific instruction manual for your watch by visiting our website at [www.chasedurerwatch.com](http://www.chasedurerwatch.com) . All you need to do is search the model number of your watch (which can be found engraved on the case back) and you will find a link to download the manual for your specific timepiece.**

## Table of Contents

Movement Types	6
Water Resistance	8
Basic Watch Setting	10
Watch Complications	12
Care Guidelines	16
Warranty	17
Sending a Watch in for Service	21
Accessories	23

## **Movement Types**

**Quartz:** A quartz movement is battery powered and does not require winding. Eventually the battery will need to be replaced. Replacement of the battery should only be performed by a Chase-Durer authorized service center. This is to ensure that the factory specifications and warranty are maintained.

**Mechanical:** A mechanical, or manual movement does not require a battery, but can only be wound by hand. To wind it, turn the crown clockwise while it is in its normal operating position until you feel resistance (screw down crowns will need to be unscrewed first). This type of timepiece should be wound daily. To prevent damage, remove the watch from the wrist prior to making any adjustments with the crown.

**Automatic:** An automatic (or self-winding) movement is a mechanical movement that winds itself and does not require a battery. When worn daily, the movement of the wrist causes the mainspring to wind progressively, eliminating the need for additional winding. To start your automatic, you can hand wind it by rotating the crown clockwise several turns while in its normal operating position. We recommend housing an automatic in a watch winder box.

**Water Resistance:** A timepiece that tests to a certain depth rating is tested under controlled circumstances. Thus, any timepiece that is listed as water resistance to 100 meters cannot literally be used to dive 100 meters beneath the surface of the water. This is because when in the water and moving around, your watch will be subject to increased pressure. Due to this discrepancy, the International Standards Organization (ISO) has set the standards of what each level of water resistance should cover for all brands of watches. Please note that ALL Chase-Durer watches are water resistant and can be exposed to water in different levels. Below are the ISO standards:

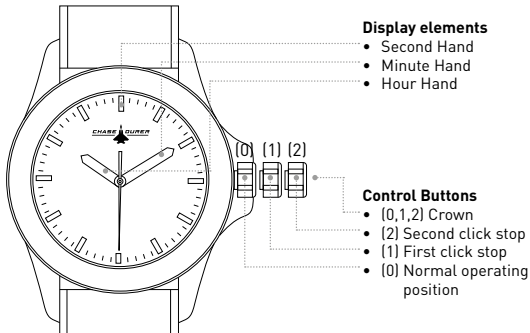
- No water resistance: Any type of water must be avoided. Even small drops of water can be detrimental to the functioning of the timepiece.
- 50 m (5 ATM): It is safe to wear your timepiece around water. For example, washing hands, showering, recreation swimming and minimum water contact are safe activities. Not suitable for snorkeling or scuba diving.
- 100 m (10 ATM): Suitable for light water activities such as snorkeling, sailing, and surfing. Not suitable for scuba diving.
- 200 (20 ATM): Suitable for water activities, snorkeling, and recreational scuba diving.
- Over 300 m (30 ATM): Used for diving (or mixed-gas diving).



Many Chase-Durer watches are equipped with a screw down crown to help prevent water infiltration. In order to adjust the date and/or time, you must first unscrew the crown before you can gently pull it out to its first or second click stop position. To do this, simply rotate the crown counterclockwise until it springs open. When you have finished setting the time/date, the crown must then be pushed in and screwed back in tightly. Not doing so will compromise the water resistance of the timepiece and will void all warranties from the manufacturer.

Exposure to chemicals and extreme temperatures can impact a watch and cause the water resistance to fail. Therefore you should never take a timepiece into a sauna or hot tub.

## Quartz, Automatic, and Manual Wind Watches.



**Zero Position.** This is the position where the crown is at its innermost neutral spot. This is the secure position for normal operation of the watch.

**First Position.** To get to this position, pull the crown outward until you hear one click. If your watch has a screw-down crown, you will need to gently unscrew the crown to get to the first and second positions. If your watch has a date and/or day indicator, this is the position in which you would be able to adjust the date and/or day wheels.

**Second Position.** To get to this position, pull the crown (from neutral) until you hear a second click. This is the position in which you set the time.

**Note:** Always remove the watch from your wrist prior to adjusting the crown.

## **Watch Complications**

Many Chase-Durer watches are equipped with features that go beyond the telling of the time and date. These functions are displayed on what are called sub dials, indicators, counters, or zones. Your watch may have one or more of these features. Knowing them will be useful when identifying which instructions pertain to your watch.



**Small Seconds:**

an alternate to the sweeping center second hand, this counter makes a continuous rotation, measuring out 60-seconds.



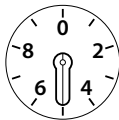
**Hours:**

a chronograph function that displays elapsed hours, often in 12 onehour intervals.



**Minutes:**

a chronograph function that displays minutes elapsed, often in 30 oneminute intervals (sometimes 60).



**Tenths of a Second:**

a chronograph function that displays tenths of an elapsed second

## What does this indicate?



- **24-Hour:** often called a GMT or second time zone indicator, the hand of this counter makes a full rotation in a 24-hour period, thereby also indicating whether it is a.m. or p.m. It is often coupled with a Sun/Moon display.



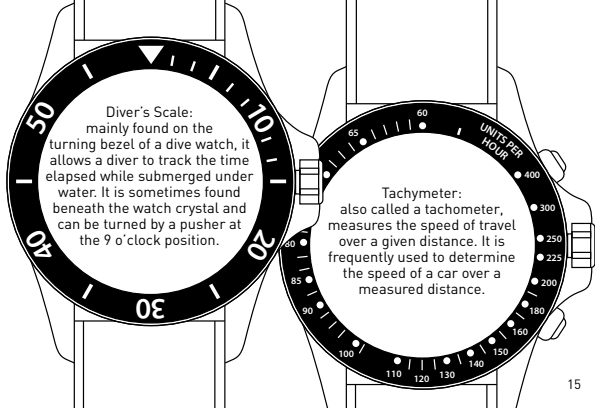
- **Sun/Moon:** indicates a.m. or p.m. through the display of the sun or moon. It is often coupled with a 24-hour indicator.



- **Moon phase:** this display assures near perfect synchronization with the lunation period, and only needs adjusting every two and a half years, should the watch never stop in that time.



- **Power Reserve:** found on some automatic watches, this zone displays the hours of autonomy remaining of a movement after it has reached its winding peak.



**Diver's Scale:**  
mainly found on the turning bezel of a dive watch, it allows a diver to track the time elapsed while submerged under water. It is sometimes found beneath the watch crystal and can be turned by a pusher at the 9 o'clock position.

**Tachymeter:**  
also called a tachometer, measures the speed of travel over a given distance. It is frequently used to determine the speed of a car over a measured distance.

## Care Guidelines

To ensure your timepiece functions reliably for years to come, please follow these care guidelines.

- The timepiece should be serviced annually to verify the water resistance rating, oil and lubricate the movement, and replace internal gaskets as needed.
- The average quartz battery will last 1-3 years, depending on the movement, and functions of the timepiece. Attend to depleted batteries immediately to avoid the risk of the battery leaking.
- Regularly clean the timepiece with a dry soft cloth.
- Avoid impacts, exposure to chemicals, magnetic fields and extreme temperatures. Avoid hot temperatures such as very hot showers, saunas, or hot tubs.
- Remove the timepiece from your wrist before operating the crown.
- Do not operate the crown or push buttons while in contact with water.
- Avoid changing the date when the watch hands are pointing between the time of 8:00 pm and 4:00 am. This is the transitional time of the date wheel, so doing so might damage the movement.



## **Warranty**

Your genuine Chase-Durer timepiece is backed by a limited three (3) year manufacturer's warranty against manufacturing defects in material and workmanship from the original date of purchase through an authorized retailer subject to the limitations contained herein.

This limited warranty covers the following components: hands, dial, markers and watch movement. This limited warranty does not cover the crystal, crown, strap, bracelet, or battery. Nor does it cover any damage that results from unauthorized or improper use, service, accident, impact, negligence, or normal wear and tear. Further, any damage caused by water intrusion due to accident, improper use, or negligence will not be covered.

Should you discover your watch is not functioning properly during the warranty period, please send your watch to one of our authorized repair centers for evaluation. Chase-Durer authorized service centers are located throughout the world. For a complete list of authorized service centers and specific instructions on sending a watch in for service, please visit our website at [www.chasedurerwatch.com](http://www.chasedurerwatch.com).

If our skilled technicians are unable to repair your warranted timepiece, Chase-Durer will send you a new timepiece of the same model or similar model of equal or greater value. This replacement will be at the sole discretion of Chase-Durer.

Please note that a flat rate of \$28.00 will be charged to cover a service evaluation fee and return shipping of all timepieces sent into our authorized repair centers. All warranty claims must be accompanied by a copy of your proof of purchase from an authorized retailer. Please do not include gift boxes or exotic straps.

Please note that any and all claims relating to this warranty and/or your purchase of a Chase-Durer timepiece must be brought in the purchaser's individual capacity and not as a plaintiff or class member in any purported class or representative action. Unless agreed by Chase-Durer, no arbitrator or judge may consolidate more than one person's claims or otherwise preside over any form of a representative or class proceeding.

Your purchase, this warranty and/or any dispute arising and/or relating to your purchase of a Chase-Durer product shall be governed and construed in accordance with the laws of the State of Florida, USA, with no regard for choice of law provisions.

Through your purchase, you hereby irrevocably and unconditionally, submit yourself to the exclusive general jurisdiction of the courts of Broward County, the State of Florida, the courts of the United States of America and appellate courts thereof.

In the event that there is a contradiction between the information contained in this booklet and the translations available on the website, the English version controls.

As Chase-Durer cannot guarantee the quality standards of an altered timepiece, the above-mentioned standard 3-year limited warranty on Chase-Durer timepieces shall be invalid if the timepiece is serviced at any time by an unauthorized repair center. This includes battery replacements, which must be done at a Chase-Durer authorized repair center in order to maintain the eligibility of the warranty. Further, Chase-Durer cannot guarantee the quality standards if the timepiece is purchased from an unauthorized retailer. In such instances, the purchaser must rely on the seller's warranty, if any.

Any additional warranty offered by an individual retailer shall be the sole responsibility of that retailer.

This limited warranty is valid for Chase-Durer timepieces accompanied by a valid and completed warranty card along with dated proof of purchase.

### **Shipping a watch for service**

Please see our webpage for a list of our authorized service centers. Customers should complete the online service request form to expedite the repair.

The product owner will be responsible for shipping the watch to and from the authorized service center. For service evaluation and return shipping, a flat rate of \$28.00 will be charged. Payment should be submitted by means of a money order, check, or credit card. Please note that we DO NOT ship to P.O. Box addresses. If your watch is not covered under the Chase-Durer limited warranty, you will be charged for the repair cost. Each repair is covered by a one year warranty, and the warranty applies to that repair only. Prices do not include sales tax.

## **Include**

- A copy of your purchase invoice with date.
- A short description of the malfunction.
- Your return address, daytime telephone, and email.
- A money order issued to the corresponding service center in the amount of \$28.00 USD for service evaluation and return shipping.
- Failure to make prior payment arrangements (money order, check, or credit card) will result in your item being returned unrepared.
- **Always insure the watch with the shipper!**

## **Do not include**

- Gift Boxes. They will not be returned.
- Exotic straps. You must remove exotic straps, or we cannot accept the shipment. It will be returned to you. Please send the watch case only. The strict laws of many countries prohibit the shipping of straps made from exotic species without proper documentation. Exotic species include, but are not limited to, alligator, crocodile, snake, ostrich, and fish, such as stingrays or salmon. Please note that genuine leather straps, synthetic straps, leather embossed straps, and metal bands are EXCLUDED from this policy - you may keep those straps attached. Thank you for your cooperation.

## **Accessories**

For information pertaining to bands, bracelets and other accessories, please visit [www.chasedurerwatch.com](http://www.chasedurerwatch.com)



[WWW.CHASEDURERWATCH.COM](http://WWW.CHASEDURERWATCH.COM)

